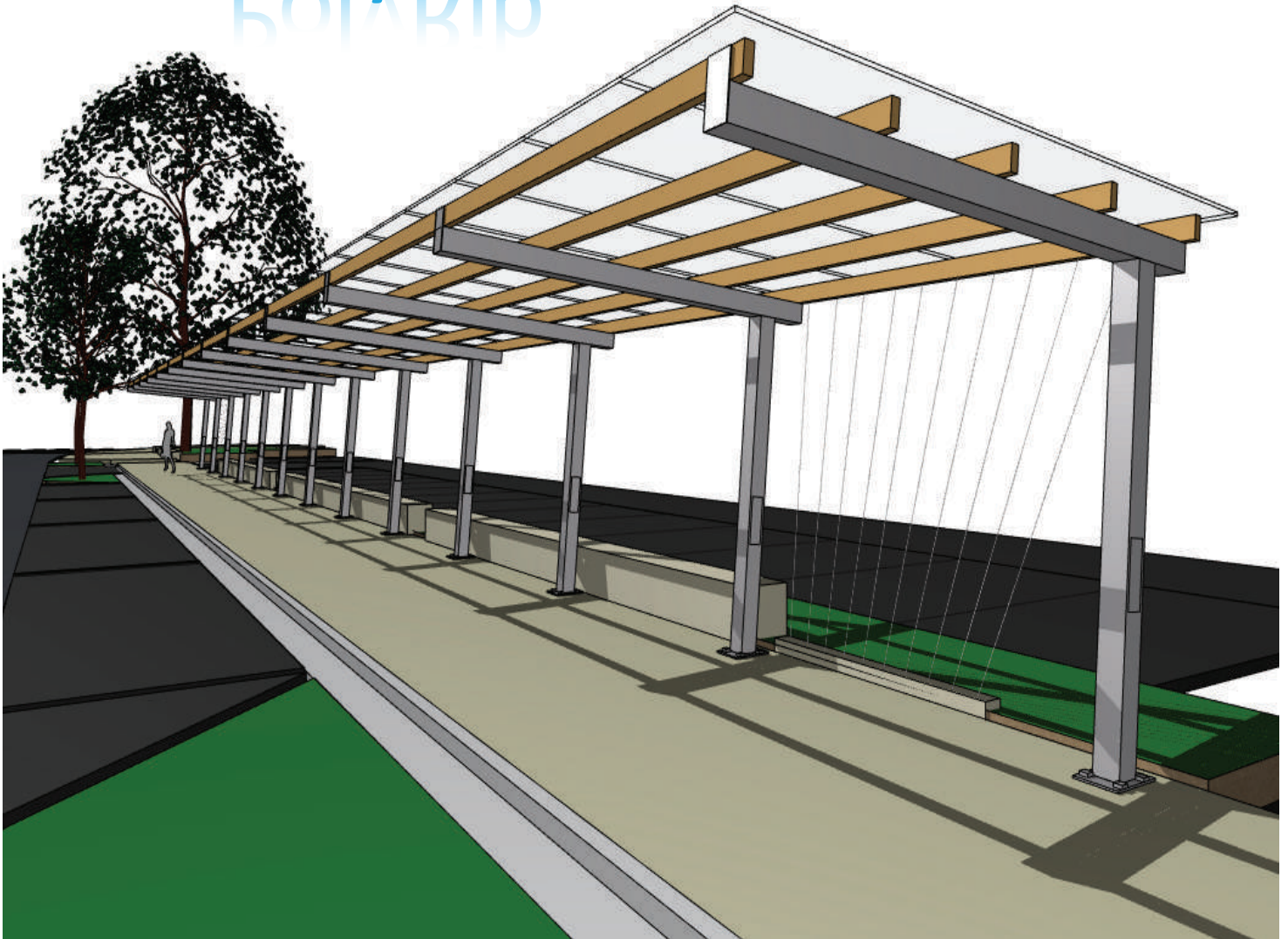


AMPELite PolyRib



PROUDLY AUSTRALIAN OWNED



Architectural Standing Seam – Making Light Work

AMPELITE

PolyRib

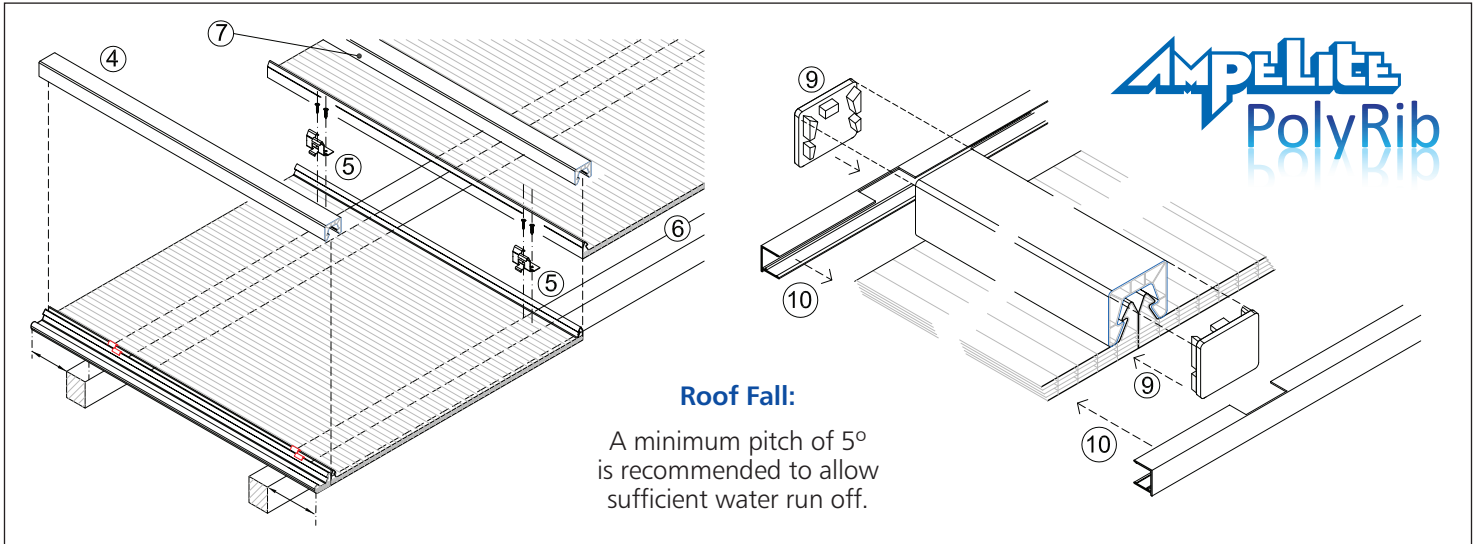


PolyRib standing seam provides exceptional quality suited to the harsh Australian environment.

Ampelite PolyRib multiwall standing seam system offers great design flexibility combining attractive visual appearance, impact resistance and high thermal qualities. The multicell construction traps air between the layers providing outstanding insulating properties.

Architects and designers can have complete confidence in meeting creative outcomes with the PolyRib system. Natural light delivered by the PolyRib system leads to substantial financial and human-performance benefits. **Illumination** through PolyRib at night achieves a dramatic practical and aesthetic effect.

Only the **highest optical quality** resin is used in manufacture. The **system comprises** a specially designed joining strip in polycarbonate or aluminium clipped over the sheet wings providing a totally weatherproof seal. The specially designed concealed stainless steel fastening clip ties the complete system to the structure. Finished off with an anodised aluminium notched end capping.

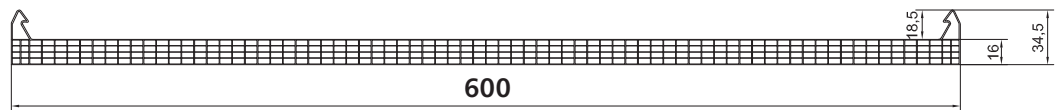


UV protection is standard to both sides for added system flexibility. Although a gauge of 16mm will cover most applications. There is a thickness and colour to suit every project.

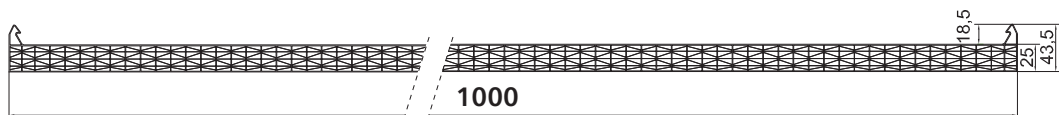
Sheet Specifications

Width	Length	U-value	Mid Span	End Span	Weight
16/600mm	Up to 11.8m	2.0 W/m ² K	1300mm	1000mm	2.6kg/m ²
25/1000mm	Up to 11.8m	1.3 W/m ² K	1400mm	1050mm	2.9kg/m ²

16/600



25/1000



Specification

The Translucent Sheeting shall be 'Ampelite PolyRib' as supplied by Ampelite Australia Pty. Ltd. to comply with AS 4256:3-2006. Licence No. 986. The gauge of the sheet shall be *16mm and be manufactured to the nominated colour. Sheeting shall be installed in accordance with Ampelite fixing instructions and with AS 1562.3-2006 Design and installation of sheet roof and wall cladding Part 3: Plastic."







* Insert gauge of sheet required.



PROUDLY AUSTRALIAN OWNED

www.ampelite.com.au

Colours

Colour	PolyRib 16/600			PolyRib 25/1000		
	%LT	SHGC	SC	%LT	SHGC	SC
 Clear	62	0.79	0.91	58	0.62	0.72
 Grey	46	0.52	0.60	29	0.37	0.43
 Opal	42	0.52	0.60	40	0.49	0.56
 Green	50	0.56	0.65	33	0.41	0.47
 Blue	23	0.25	0.29	18	0.23	0.27
 Red	9	0.11	0.13	7	0.09	0.10

*A minimum order quantity may apply depending on colour and gauge chosen.

Legend

LT (Light Transmission) = The percentage of visible light that passes through an object.

SHGC (Solar Heat Gain Coefficient) = Is the fraction of solar radiation transmitted, which includes the direct solar transmission and the part of the solar absorption radiated inward. The lower the number the less heat the sheet transmits.

SC (Shading Coefficient) = The ratio of the total solar radiation transmitted by a given material to that transmitted by normal 3mm glass, whose light transmission is 87%.



PolyRib standing seam provides exceptional quality suited to the harsh Australian environment.

PolyRib Beam – Structural Rafter Span Tables

The load table (below) has been prepared to give guidance to span capabilities of PolyRib Span Bar used in domestic applications applying to veranda, patio, awning and carport. Allowable spans apply to open structures as defined in the Australian Standards. Generally two or more sides are open and clear of walls. The above table includes a dead load of 0.1kPa for roof cladding and excludes any ceiling loads. The span is suitable for non trafficable roof. Span table has been designed for Wind Classification regions as indicated in AS 4055–2006. A deflection serviceability limit of Span/150 has been applied to the tables. Span shown in bracket indicate a 20mm maximum deflection limit. The table is for use in non cyclonic areas as defined in AS/NZS 1170.2–2002.

The structural sections comply with the following Australian Standards.

- AS/NZ 4600–2005 Cold formed Steel Structures
- AS/NZ 1170.1–2002 Structural design actions-Permanent imposed and other action
- AS/NZ 1170.1–2002 Structural design actions-Wind actions
- AS/NZ 4005–2006 Wind Loads for Housing

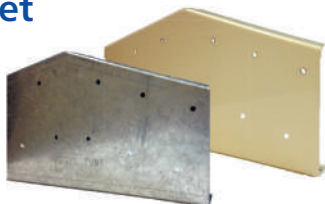
Minimum strength steel used in below table is based on a Yield stress of 300Mpa and Tensile strength of 340Mpa. The site conditions and use of sections for design should be determined by a suitably qualified person.

RAFTERS	SPACING	
	600mm	900mm
Rafters Single Span – 100x50x1.5RHS Sheet Roof - Max N3 Wind Categories	4200	3700
Rafters Single Span – 100x50x1.5RHS Sheet Roof - Max C3 Wind Categories	3300	2700
Rafters Continuous Span – 150x50x1.5RHS Sheet Roof - Max N3 Wind Categories	5600	5000
Rafters Continuous Span – 150x50x1.5RHS Sheet Roof - Max C3 Wind Categories	4000	3300

POLYRIB BEAM SPAN TABLES FOR ATTACHED FLAT ROOF							
DESIGNATION	RAFTER SPACING	MAXIMUM RAFTER SPAN (mm)					
		WIND CATEGORY					
		N1	N2	N3	N4	N5	N6
		DESIGN PRESSURES (Kpa)					
		0.69	0.95	1.5	2200	3200	4400
100X50X1.5	900	5000 (4400)	4800 (4400)	3800	3200	2600	2200
	1200	4600 (4100)	4200 (4100)	3300	2700	2300	1900
	1500	4000 (3700)	3400	2700	2200	1800	1600
	2100	3700 (3600)	3200	2500	2100	1700	1500
150X50X1.5	900	7600 (6000)	7300 (6000)	5900 (5400)	4800	4000	3400
	1200	6900 (5600)	6400 (5600)	5100	4200	3400	3000
	1500	6000 (5000)	5200 (5000)	4100	3400	2800	2400
	2100	5600 (4800)	4800	3800	3100	2600	2200

Apex Bracket

- APX10015°
- APX15015°
- APX10022.5°
- APX15022.5°

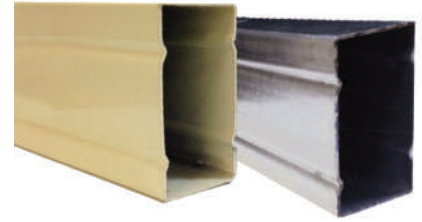


Corner Bracket

- CB100
- CB150



Rafters



Suitable for Painting and Powder Coating galvanised inside and outside for that ultimate corrosion protection light weight high strength.

Accessories available:

Plastic end caps, PolyRib Beam brackets.

PolyRib Beam Size Range:

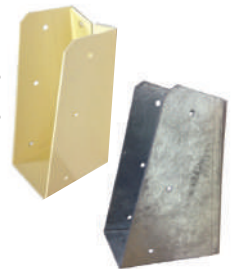
- 100 x 50 x 1.5mm
- 150 x 50 x 1.5mm

PolyRib beam provides the ability to span long distances without the need of intermediate support.

PolyRib Beam – Connection Accessories

Architectural Framing Brackets

- AFB10015°
- AFB15015°
- AFB10022.5°
- AFB15022.5°



Framing Brackets

- 0° - 5° PITCH
- FB100
- FB150



PROUDLY AUSTRALIAN OWNED

www.ampelite.com.au

PolyRib – Parts List



AMPELITE PolyRib SHEET



FASTENING CLIP IN STAINLESS STEEL



POLYCARBONATE CLOSURE CAP



POLYCARBONATE JOINING RIB



POLYCARBONATE EDGE CLOSURE



POLYCARBONATE STARTING STRIP



TOP & BOTTOM NOTCHED END CAP ANODISED ALUMINIUM



BREATHER TAPE



SEALING TAPE

PolyRib 10 Year Warranty

Provided by Ampelite Australia Pty Ltd an Australian owned and operated company.

INSTALLATION HINTS

Both sides of the sheet are UV protected and can therefore be installed with either side facing up. Please contact Ampelite for further details.

Sheeting can be cut to length using a power saw fitted with a fine tooth blade of a type suitable for plastic. A sharp blade can be used for cutting to width.

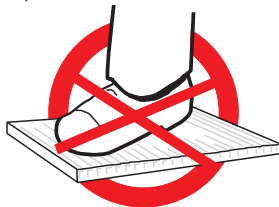
Do not use sealants that are not 100% chemically compatible with polycarbonate sheeting; suitable sealants are available from Ampelite.

The use of incorrect sealants will void the warranty.

For installation in curved applications, please contact Ampelite.

SITE SAFETY

In all applications, sheeting should not be used to support a person's weight during installation or cleaning. A temporary wooden beam or other device, supported by roof members, should always be used.



CLEANING OF POLYRIB SHEETING

Wash sheet with a solution of mild soap or household detergent and lukewarm water, using a soft cloth or sponge to loosen any dirt and grime.

Rinse off with cold water and dry with soft cloth to avoid spotting.

Note: Never use an abrasive or highly alkaline cleaner on sheet. If you are unsure as to what cleaning agents can be used, please contact Ampelite.

CHEMICALS AND POLYCARBONATE

Polycarbonate sheeting is affected by petrol and petroleum based products (including paint), methylated spirits, ketones, benzene, acetone, hydrocarbons, phenols, abrasive cleaners, harsh cleaners and solvent cleaners.

It is less affected or unaffected by kerosene, mineral oils, alcohols, glycols, vegetable fats, animal fats, acids, glycol, non abrasive cleaners, mild detergents and soft soap.

INSTALLATION STANDARD

Installation of Ampelite PolyRib Sheeting shall be in accordance with the Ampelite fixing guide, together with AS 1562.3: 2006, Design and installation of sheet roof and wall cladding - Part 3: Plastic.

DISCLAIMER

While the contents of this brochure are believed to be correct at the time of printing, revisions to the colour range, sheet lengths available, procedures or data may be made without notice. All recommendations are made in good faith but without warranty.

The colour representations of PolyRib polycarbonate in this brochure are as accurate as the nature of the material and commercial photographic and printing processes allow. It is probable that colour tints may vary between those shown in this brochure, sample pieces and the delivered product. Where colour is critical we recommend that you inspect up to date samples of the actual material to be used at your retail outlet prior to purchase. Very minor variations in sheet colour may occur from time to time but are virtually undetectable in situ; blue or grey skies and intense sunlight may cause a variation in the apparent colour from day to day.

Ampelite is a proudly Australian owned manufacturing company. Profits remain in Australia and taxes paid benefit our community.



Ampelite Australia Pty Ltd
ABN 91 487 122 629

Plumbing Merchants Association
Supplier Of The Year for
2006, 2007, 2008, 2009, 2011 & 2014



VIC & TAS: Tel 03 8710 9110 Fax 03 9794 0710

NSW & ACT: Tel 02 9625 7200 Fax 02 9625 7211

QLD: Tel 07 3382 8300 Fax 07 3200 8703

NTH QLD: Tel 07 4774 5007 Fax 07 4774 7898

SA & NT: Tel 08 8260 7391 Fax 08 8260 7397

WA: Tel 08 9302 6833 Fax 08 9302 6855

NZ: Tel 09 634 5366 Fax 09 622 2060

www.ampelite.com.au



Quality Endorsed Company

AS/NZS ISO 9001
QEC 4787
SAI GLOBAL